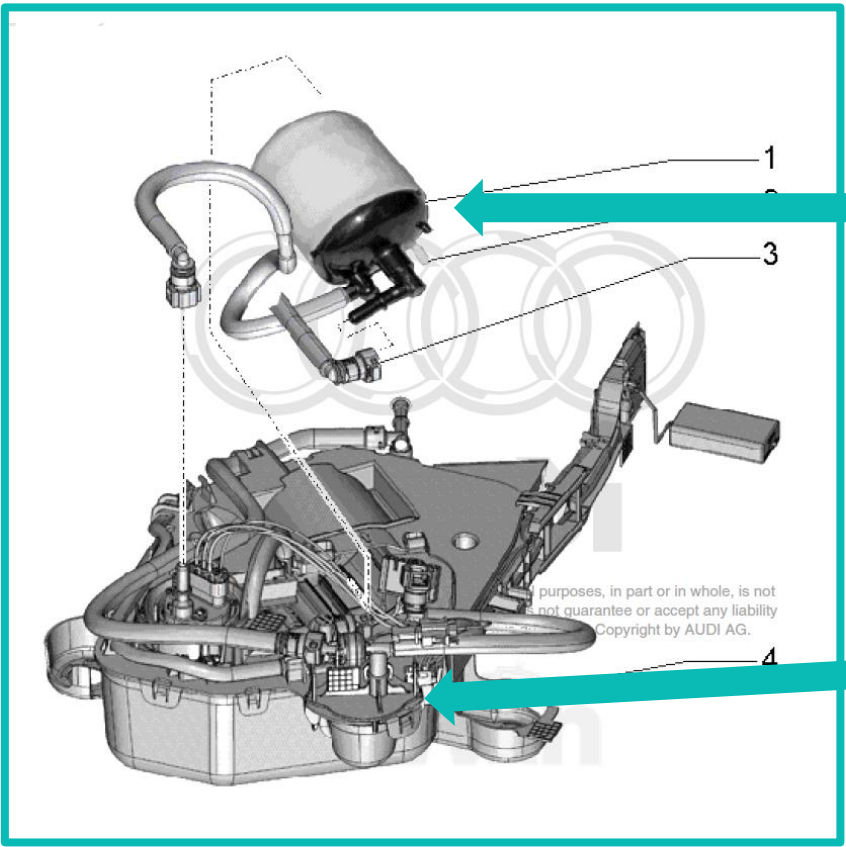


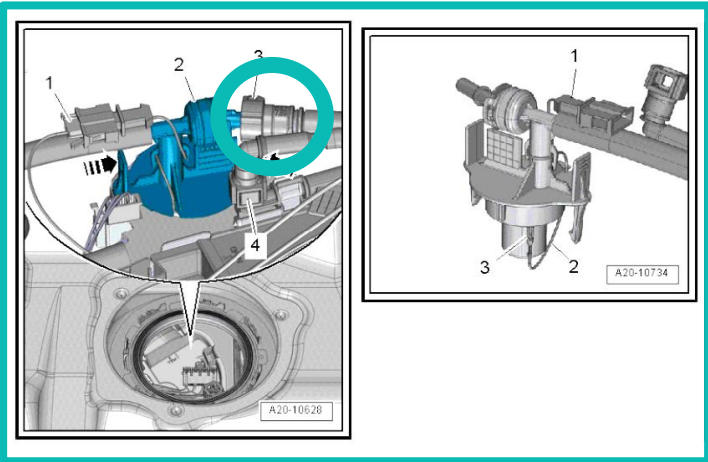
# ***D4 Dual Brushless Low Pressure Fuel Pump (in tank LPFP)***

***Installation Notes***

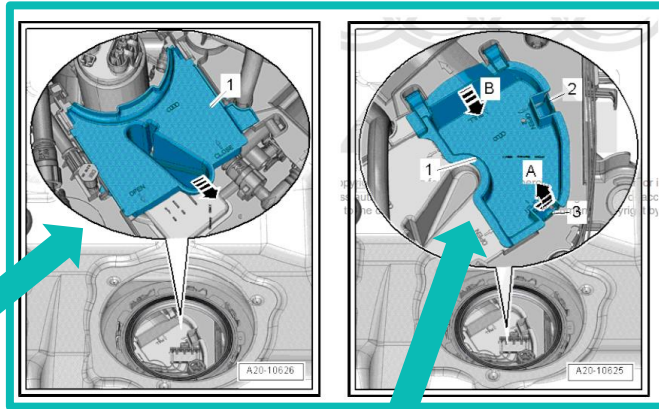


**Remove and discard the OEM Fuel Filter**

**Remove and discard the OEM fuel pressure regulator (see below for another view)**



**The circled fitting will be connected to the new fuel pressure regulator later**



Remove and discard

Remove this piece and drill the thru-holes with the mount positioned as pictured below. Secure the mount to the cover with the 2 flat-head screws and nylon lock nuts.

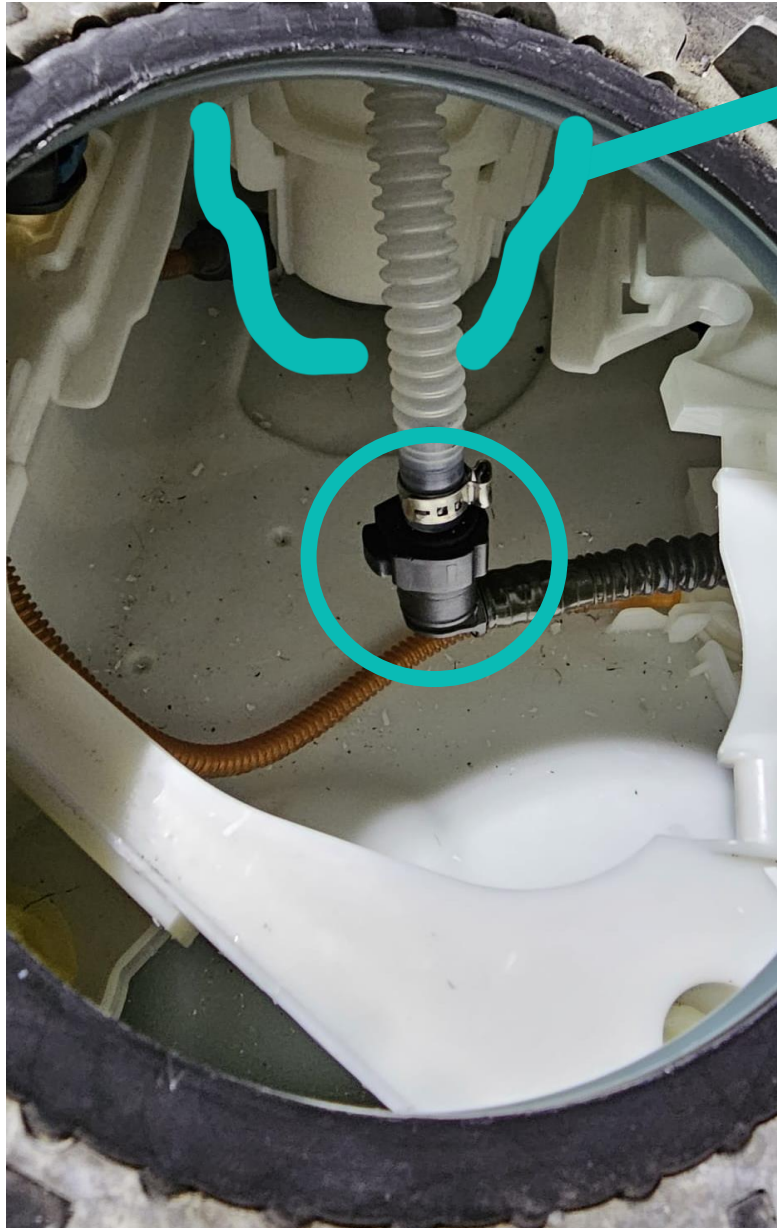




To the left you can see how the holes are drilled and the mount is oriented. The bottom photos show the installation position of the secondary pump (tank has been cut to show internal)







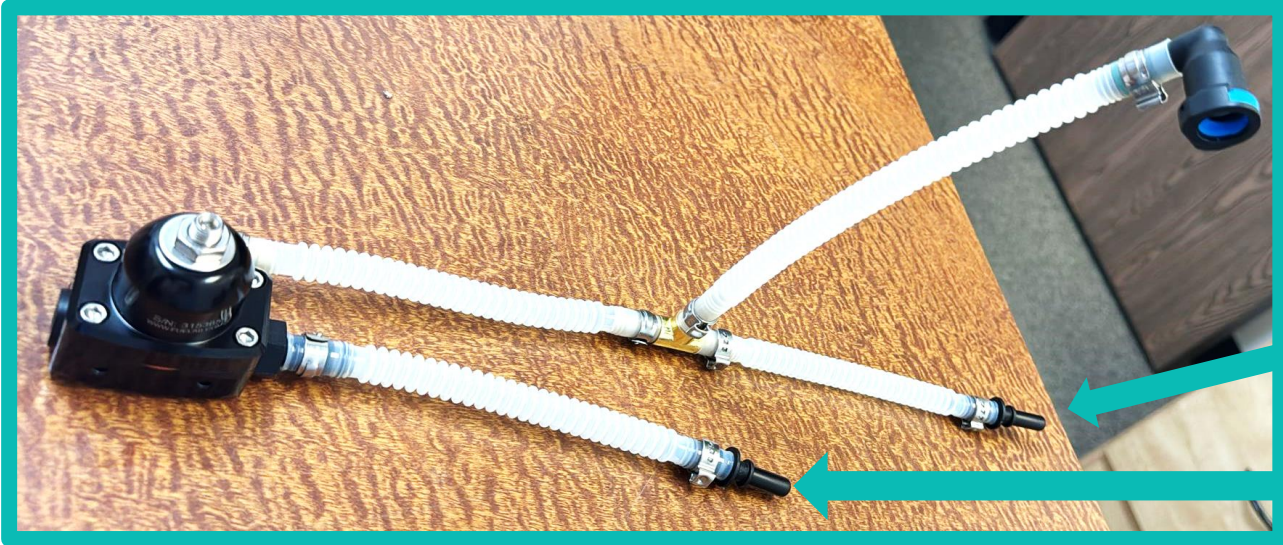
**OEM  
Primary  
pump**

The OEM pump and connector design is badly flawed on these and fail at a high rate, so we always recommend replacement. We include a brand new OEM pump in our "FULL" kit. We do offer a basic kit without this pump, but you should strongly consider the health of your OEM pump.

Fitting connected to the  
hose inside the tank



## 2.1 Pressure Regulator (Located inside the fuel tank)



← Connect to tank bulkhead

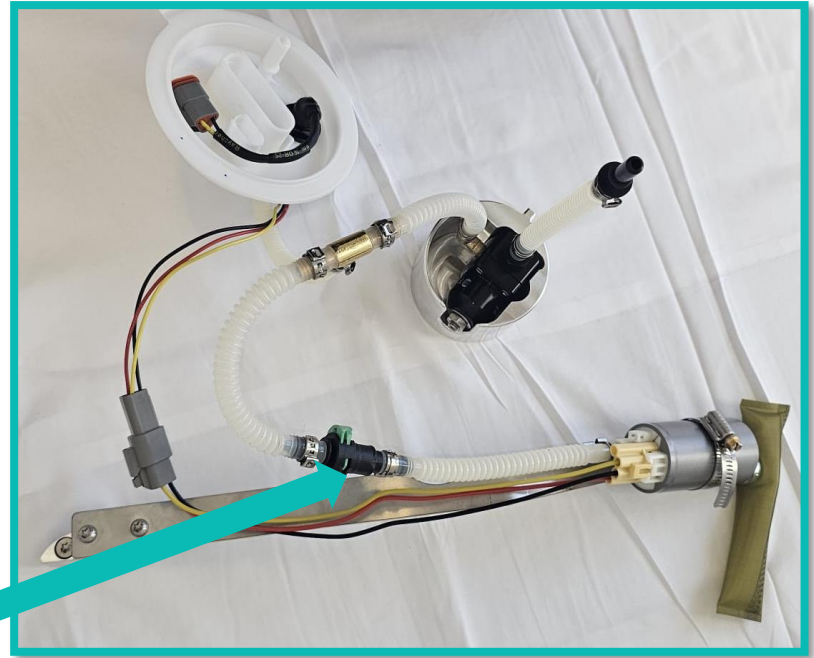
← Connect to secondary fuel pump

← Connect to internal hose from Fuel Pressure Regulator



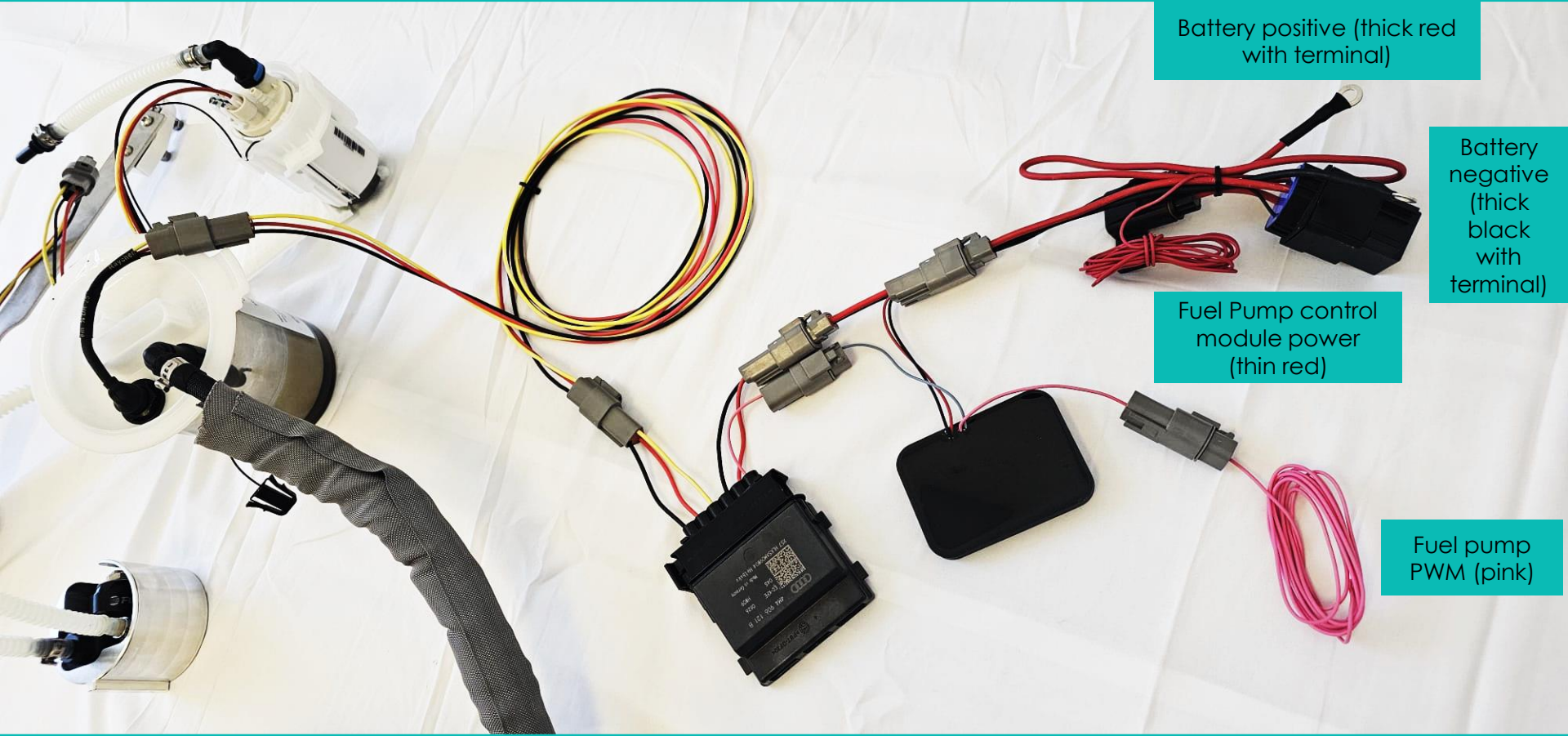
Pictured here is the new fuel pressure regulator which is installed in the position where the OEM fuel filter used to reside. The fuel filter on our system will now be located in the engine bay.





Connection of hoses  
to the secondary  
pump

## Wiring Kit



Battery positive (thick red with terminal)

Battery negative (thick black with terminal)

Fuel Pump control module power (thin red)

Fuel pump PWM (pink)

Fuel pump control module power wire is spliced into the Red/Gray power wire in the fuel tank wiring loom

Fuel pump PWM wire is spliced into the White/Brown wire in the fuel tank wiring loom